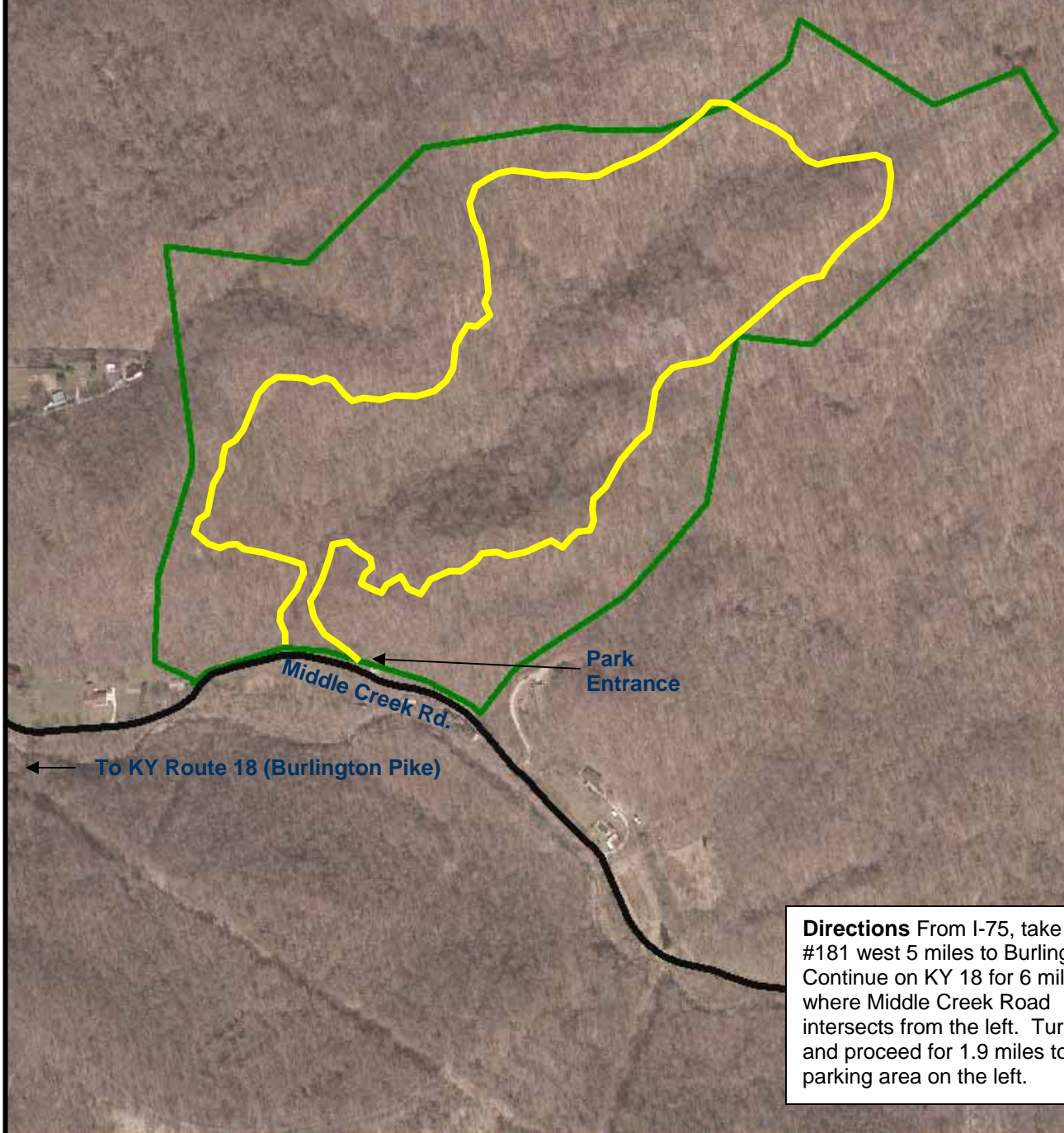


ATTENTION:

- There is no cell phone coverage.
- Do not hike alone.
- These trails are NOT paved.
- Let someone know you're going to this park before you leave.
- Wear appropriate hiking attire.
- Do not go off the trail if at all possible.
- This park is closed during hunting season.

This 74 acre park has 2 miles of moderate to strenuous marked trail that offer hikers an opportunity to experience the tranquility of this preserve.



Directions From I-75, take exit #181 west 5 miles to Burlington Continue on KY 18 for 6 miles, where Middle Creek Road intersects from the left. Turn left and proceed for 1.9 miles to our parking area on the left.



Boone Cliffs 4990 Middlecreek Road, Burlington, KY 41005
Boone County Parks & Recreation 859-334-2117

